

Placement commissioning

One platform to help all children



launching
1.11.16

Every child is unique, and so is every foster carer and children's home. Children in care need to be with people who can meet their individual needs, but finding the right placement can be hard.

Link Maker is designed to help. For the first time, all fostering providers and children's homes can make live details of their vacancies available in one place, saving everyone time. Searching by specific needs or areas brings up all available options for a child, and helps the most suitable placements to be explored without delay.

The user-friendly website is already the main matching tool in the UK for adoption, used by nearly every local authority and independent agency. The new commissioning platform has been recommended to all authorities and providers, and to the government, by Sir Martin Narey. His recent review of residential care highlights the inefficiencies and poor intelligence in current commissioning practice, and how Link Maker can change this.

With a **free trial until 31st March 2017** you can find the right placements for unique children, carers and homes wherever they are.



Find more details and video at www.linkmaker.co.uk

Unique vacancies

1. Through their accounts, providers maintain live details for each vacancy covering skills, experience, and potential start dates (carers contact details remain confidential).

Unique children

2. When looking for a placement, a local authority defines a child's individual needs and the outcomes required.

Less delay

3. A search presents all placement options instantly.

Searching wide

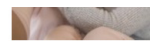
4. When necessary, a national search can easily be filtered according to specific needs.

Staying close to home

5. Search results can also be filtered for individual placements within any defined area, or areas.

Home facilities	<input type="text" value="Walk in shower x"/>
Is the carer willing to accept a pet in the placement *	<input type="checkbox"/> Wheelchair accessible
	<input type="checkbox"/> Hoist available
	<input checked="" type="checkbox"/> Ground floor bedroom / lift
	<input type="checkbox"/> Other
Available now *	<input type="text" value="Please select"/>

Preferred environment	<input type="text" value="Rural (30 mins plus walk from transport links) x"/>
Required facilities	<input type="text" value="Wheelchair accessible x"/>
Purpose of placement *	<input type="text" value="Support move to another placement"/>
Response required by	<input type="text" value="5"/> <input type="text" value="October"/> <input type="text" value="2016"/> <input type="text" value="10"/> <input type="text" value="00"/>



[Bookmark](#) [See full profile](#)



Brigit

Manager, 29
Wales - Abertawe
[Pre-adoption](#) [Remand](#) [Parent and Child](#)

[Bookmark](#) [See full profile](#)



Arsalan and Shabnum

Religion and Ethnicity ▾

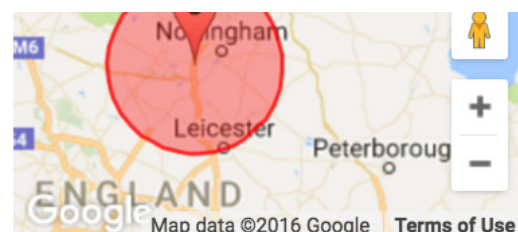
Specific needs ▾

Open to need

Developmental delay

Autistic spectrum disorder

Mobility impairment



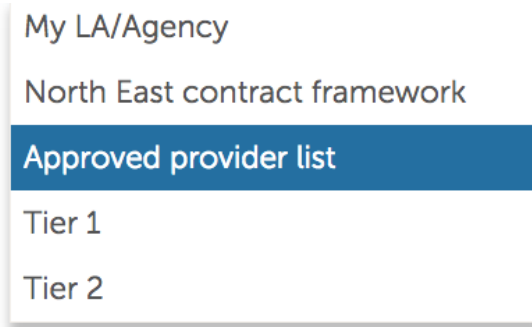
20|

[Filter](#)

[Reset](#)

Provider groups

6. Vacancies can be viewed from within a particular framework or approved list, as well as an authority's in-house provision.



Placement requests

7. Link Maker is flexible and designed to support existing processes. For example, placement requests can be uploaded and issued to specific provider groups, or within certain areas.

Placement request form *

Placement request form *

Placement request form Delete

Other supporting documents

Choose files

Streamlining processes

8. This targeting can be adjusted at any time, and automatic schedules can issue a request more widely over hours or days.

Your agency	Started 12:09pm on 8th September
SE framework - tier 1	Will start 4:32pm on 10th September
SE framework - tier 2	Will start 4:32pm on 11th September

Secure communication

9. When a potential placement is found, this prompts immediate discussion by telephone, or on the secure, ISO 27001 assured platform.

Child profile * Girl A (Under 1) and Girl S (8) #SCP5

Message * I would like to explore the possibility of a placement with this carer ASAP. I will share further document now on the system, and please contact me on the details provided.

Maximum number of characters is 1500

Keeping track

10. Sensitive documents can be made available on-screen for only as long as needed, making data protection obligations easy to meet.

Document - Medical records by John Smith	21st October 11:26
To: Eden Young	
Medical records	
Message by John Smith	19th October 14:00
Discussion started by John Smith	19th October 13:59
Interest shown by Eden Young	19th October 13:54

Link Maker is designed to make the whole process of finding and arranging placements more efficient, and the time saved can be used in other areas.

Monitoring & data collection

A UK-wide platform can give an accurate picture of the placement market nationally, regionally or locally. Along with data on children's needs, this can help the sector to identify any gaps in provision. At a local authority level, detailed reports can inform commissioning strategies and recruitment.

Collaboration & partnership work

Link Maker helps local authorities and providers to work together, and is independent of both. Within consortium or partnership arrangements, staff from different organisations can share tasks, information and cases seamlessly and securely.



See for yourself

The system was created by individuals with first hand experience of children's social care. It aims to be as transformational in fostering and residential care as it has been in adoption, and we are now inviting the whole sector to try it.

A free trial is available to all authorities and providers until the end of March 2017. Anyone in your team can create individual accounts on the live system and get started straight away - no set-up or training is required. Or get in touch to discuss how Link Maker could fit with your placement practice.



www.linkmaker.co.uk
0843 886 0040



Certificate Number 13543-45N-001
ISO 27001

Developed with support from the sector, including:

